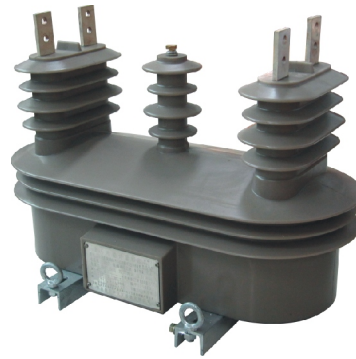


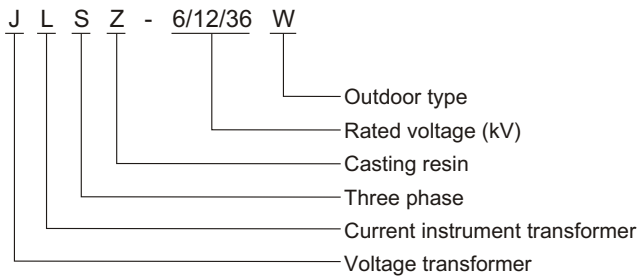
## JLSZ-6/12/36(W) Combination Instrument Transformer

### Summary

The JLSZ-6/12/36(W) are combined voltage and current instrument transformers. The combination set of combined instrument transformer and measuring meter is called electric measuring tank. The product is used in three-phase systems of rated frequency of 50/60Hz. They are mounted in outdoor service conditions. The rated primary voltage is respectively 6kV, 12kV and 36kV, with rated current ranging from 1A to 1kA. The rated secondary voltage is 100V. And the instrument transformers have four versions with different voltages 6/12/36 kV. The transformers are designed for three-phase electric systems of rated frequency of 50/60Hz. The products are applied to metering electric energy, voltage controlling and relay protection. The tank is accurate, light, reliable, theft-proof and leakage-proof. It is a cost-efficient equipment for controlling electric power.



### Model



### Technical specification

1. Rated voltage:  $3 \times 6\text{kV}$ ;  $3 \times 12\text{kV}$ ;  $3 \times 36\text{kV}$
2. Accuracy class: 0.5, 0.2, 0.5S and 0.2S
3. Rated voltage ratio: 6k/100; 12k/100; 33k/100
4. Rated current ratio: 1~1k/5 A (two type: single ratio and double ratio)
5. Primary wiring of double measuring tank: P1 and P2 are heavy current ratio while P1, P3 are high current ratio.
6. Rated burden:
  - a) PT components: 15, 25 and 50 VA
  - b) CT components: 10, 25 and 30 VA.

### Outline dimension

